

# AmeriBRAKES<sup>®</sup>

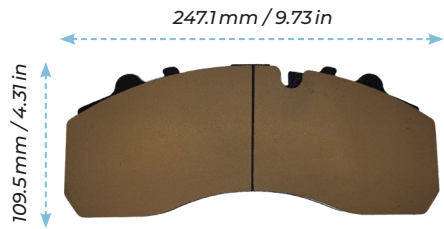
## AIR DISC BRAKE PADS



100% Manufactured in North America

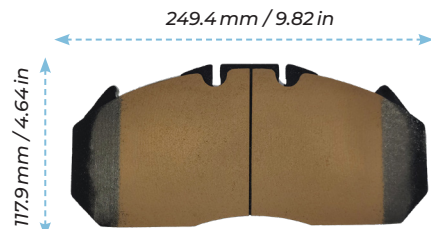


# AMERIBRAKES AIR DISC BRAKE PADS



## ASD1203-S3K, S6K

FMSI D # - D1203  
Friction # - 8323  
Brake Systems - Knorr  
Bremse/Bendix SB7, SN7



## ASD1310-S3K, S6K

FMSI D # - D1310  
Friction # - 8425  
Brake Systems - Lucas D-Elsa 2



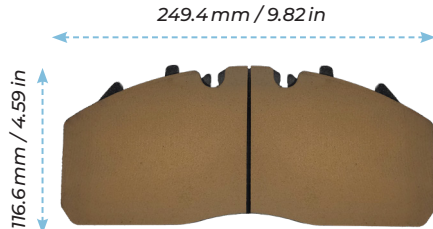
## ASD1311-S3K, S6K

FMSI D # - D1311  
Friction # - 8426  
Brake Systems - Meritor EX225H2



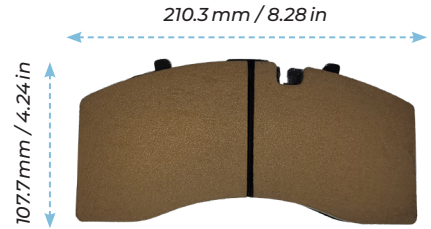
## ASD1312-S3K, S6K

FMSI D # - D1312  
Friction # - 8427  
Brake Systems - Meritor D-Lisa



## ASD1323-S3K, S6K

FMSI D # - D1323  
Friction # - 8435  
Brake Systems - Meritor EX225H3



## ASD1369-S3K, S6K

FMSI D # - D1369 - 9mm  
Friction # - 8479  
Brake Systems - Knorr SK7/  
Bendix ADB22X



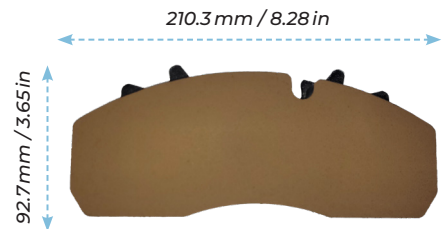
## ASD1370-S3K, S6K

FMSI D # - D1370  
Friction # - 8480  
Brake Systems - Meritor EX225L2



## ASD1407-S3K, S6K

FMSI D # - D1407  
Friction # - 8515  
Brake Systems - Meritor D-Elsa 1



## ASD1438-S3K, S6K

FMSI D # - D1438  
Friction # - 8556  
Brake Systems - Wabco Pan 19



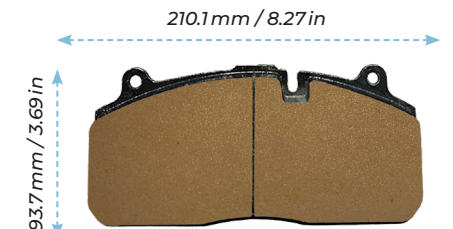
## ASD1518-S3K, S6K

FMSI D # - D1518  
Friction # - 8727  
Brake Systems - Wabco Pan 17



## ASD1560-S3K, S6K

FMSI D # - D1560  
Friction # - 8771  
Brake Systems - Meritor D-Duco



## ASD1583-S3K, S6K

FMSI D # - D1583  
Friction # - 8975  
Brake Systems - Haldex DB22LT

# REFERENCE GUIDE AND CATALOG

249.7 mm / 9.83 in

109.5 mm / 4.31 in



**ASD1708-S3K, S6K**  
 FMSI D # - D1708  
 Friction # - 8931  
 Brake Systems - Meritor Elsa 225-3

210.3 mm / 8.28 in

109.7 mm / 4.32 in



**ASD1777-S3K, S6K**  
 FMSI D # - D1777  
 Friction # - 9007  
 Brake Systems - Wabco Pan 22-T,  
 Pan 22 & 22-1

210.3 mm / 8.28 in

108.0 mm / 4.25 in



**ASD1777A-S3K, S6K**  
 FMSI D # - D2061  
 Friction # - 9294  
 Brake Systems - Wabco  
 Maxxus/MAXX22T

215.0 mm / 8.46 in

111.1 mm / 4.37 in



**ASD2252-S3K, S6K**  
 FMSI D # - D2252  
 Friction # - 9490  
 Brake Systems - SAF Holland  
 P89, P89S

215.8 mm / 8.50 in

98.7 mm / 3.89 in



**ASD2421-S3K, S6K**  
 FMSI D # - D2421  
 Friction # - 9645  
 Brake Systems - Meritor EX225L410

216.0 mm / 8.50 in

108.8 mm / 4.28 in



**ASD2526-S3K, S6K**  
 FMSI D # - D2526  
 Friction # - 9757  
 Brake Systems - Meritor EX225LS

208.3 mm / 8.20 in

108.6 mm / 4.27 in



**ASD2588-S3K, S6K**  
 FMSI D # - D2588-I  
 Friction # - 9816  
 Brake Systems - Wabco Maxxus 2.0



**100% Manufactured  
in North America**

*\* More SKUs available upon request*

## TWO (2) FRICTIONS COVER THE VARIOUS LOAD REQUIREMENTS OF AIR DISC BRAKES:

Our S3K material is rated for up to 23K pound axle loads and everyday heavy duty use. S6K material is rated up to 26K pound use and more severe service use; S6K material is designed for high heat applications like refuse trucks.



### • Heavy Duty – S3K

- Line haul
  - High Mileage
  - Limited stopping
- Motor Coach
  - Limited Stopping
  - Long Pad and Rotor Life

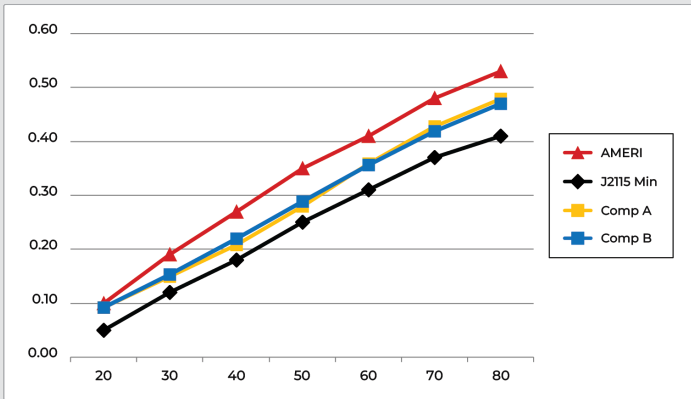
### • Severe Use – S6K

- Refuse Trucks
  - Heavy loads
  - Frequent stops
  - High heat
- Concrete Mixers / Dump Trucks
  - Heavy loads
  - Shifting loads
- Transit Bus
  - Frequent stops
  - High heat
  - Short stopping distance



# D1369

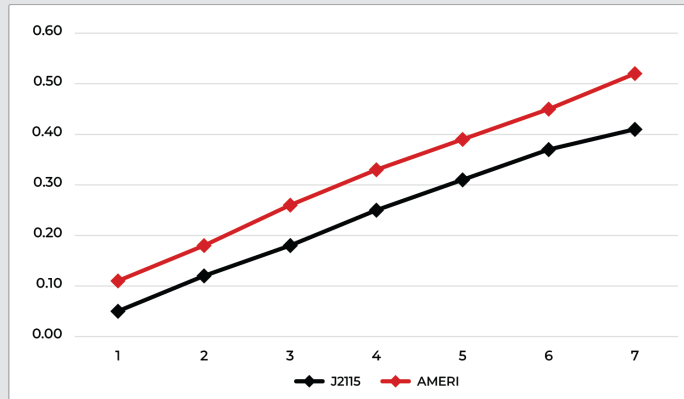
**J2115 Retardation vs Pressure Test**



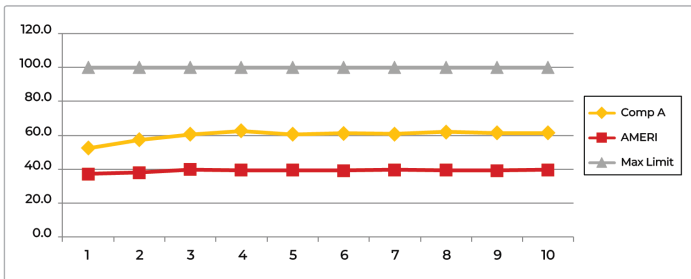
**Retardation vs. Pressure** – A higher ratio indicates better stopping performance and shorter stopping distances.

# D1203

**J2115 Retardation vs Pressure Test**

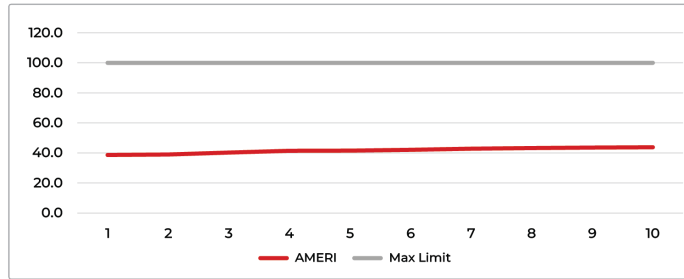


**Brake Power Test**

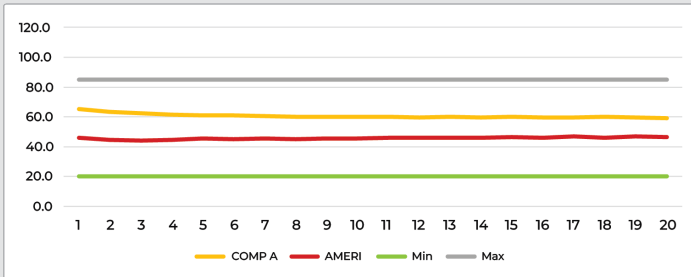


**Brake Power** – Lower pressure is better. This means it requires less pedal effort from the driver to stop the vehicle.

**Brake Power Test**

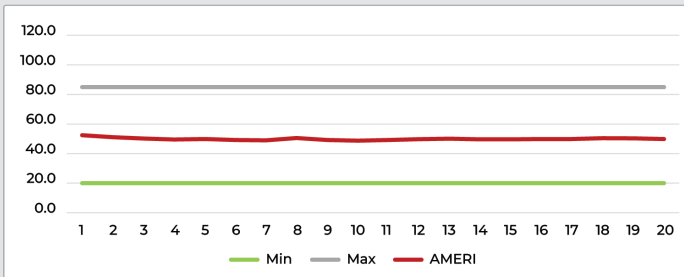


**Brake Recovery Test**



**Brake Recovery** – A measure of how effectively the friction material recovers from the previous stop. Closer to the midpoint between min and max pressure limit is better as it means more consistent pressure throughout the test, indicating consistent, predictable performance.

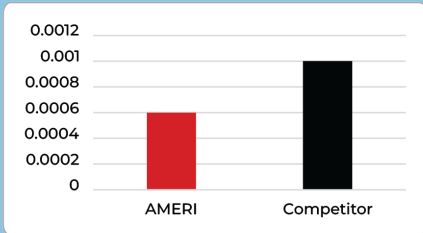
**Brake Recovery Test**



## FRICITION COATING

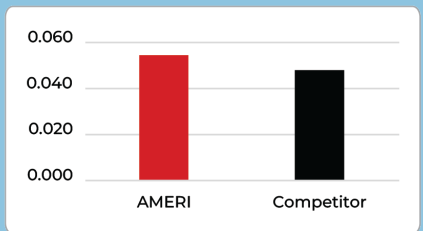
Our pads feature a proprietary, high-tech burnish coating that increases initial bite and accelerates the mating of the pad and rotor surface. This composite coating contains high-temp abrasives and friction modifiers, allowing the components to achieve an ideal interface for long life and exceptional wear resistance.

**Rotor Wear**



While the AMERI pad wear is slightly higher, rotor wear is substantially less requiring fewer rotor changes, therefore saving money.

**Pad Wear**



**FOR MORE INFORMATION, CONTACT US:**

www.momentumusainc.com  
www.autopartsource.com  
866-272-8330