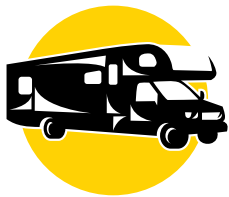


MAX DUTY

AIR DISC • FLEET • HEAVY DUTY • MEDIUM DUTY



*Higher Return On
Mileage Per Dollar*



*Superior Performance,
Quiet And Clean*



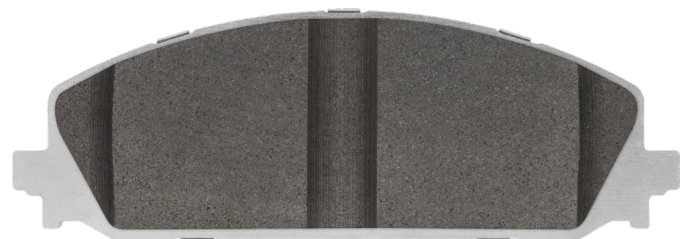
*North American
Manufactured*



COVERAGE FOR FLEET, HEAVY DUTY, EMERGENCY SERVICES AND MUNICIPALITY VEHICLE

- 51 part numbers applicable for fleet, emergency, municipality and other vehicles that just work hard
- Exceeds FMVSS performance standards
- Road proven performance from the extreme service duty of police pursuit vehicles, emergency response vehicles, industrious work trucks and the reliability of school bus transportation
- **Increases rotor service life** – fast heat transfer extends pad life, delivers more consistent braking and reduces fade
- Max Duty brake pads are responsive and dependable
- 100% North American Manufactured

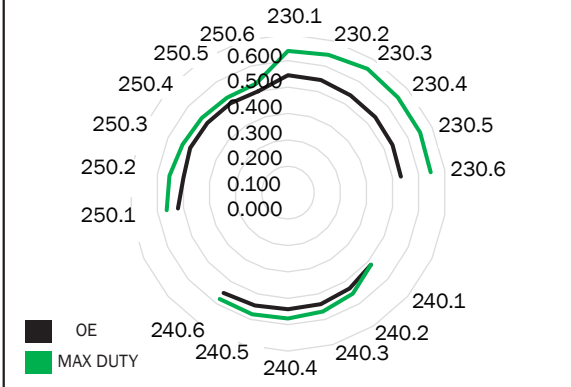
New Late Model Applications Available



ORDER YOURS TODAY • 1-800-314-2543 • abswhse.com

MAX DUTY

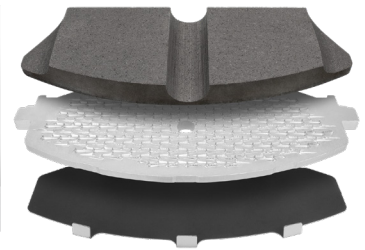
4th Effectiveness mu - Max Duty SAE J2784 on the F250/350 Platform



The fourth effectiveness section of J2784 measures brake effectiveness at three different speeds with a GVWR load. Mu is the coefficient of friction and is a measure of a material's effectiveness. This chart shows how the Max Duty material behaves similar to the OE, but with a higher coefficient of friction.

Your Replacement Solution For Total Performance

- Excellent on-fleet usage
- Quiet and exceptional wear
- School bus fleets using today with great results
- Made in North America assures consistency and high quality materials



| PART # | LOC | FROM YR | TO YR | POPULAR APPLICATIONS |
|---------|-----|---------|-------|--|
| RAM769 | F/R | 1996 | 2022 | Blue Bird; Chevrolet/GMC: Ford; Freightliner; Hino; IC Bus; Isuzu; Workhorse |
| RAM784 | F | 1999 | 2020 | Chevrolet/GMC Vans and Pickups; Hummer H2 (03-09) |
| RAM786 | F/R | 1998 | 2021 | Blue Bird; Ford; Freightliner/Thomas Bus; IC Bus; KW/Peterbilt; Workhorse |
| RAM825 | F | 1997 | 2021 | Chevrolet/GMC: LCF, Tiltmaster; Isuzu: NPR, NPR-HD, NQR, Reach |
| RAM827 | F | 1997 | 2021 | Chevrolet/GMC: LCF, Tiltmaster; Isuzu: FTR, NPR, NPR-HD, NQR, NRR |
| RAM1066 | F/R | 2005 | 2021 | Ford; IC Corp: AC Commercial Bus; International: CF500/600, TerraStar |
| RAM1317 | F | 2007 | 2018 | Dodge/Freightliner/Mercedes-Benz: Sprinter 2500, 3500 |
| RAM1328 | F | 2008 | 2023 | Ford: E-150, E-250SD, E-350SD, E-450 SD |
| RAM1330 | R | 2008 | 2022 | Ford: E-450 Super Duty |
| RAM1335 | F | 2008 | 2021 | Dodge: Ram 4500, Ram 5500 |
| RAM1363 | F | 2007 | 2020 | Chevrolet/GMS: Pickups and SUVs |
| RAM1411 | F/R | 2009 | 2020 | Chevrolet/GMC: Vans and Pickups |
| RAM1414 | F | 2010 | 2018 | Ford: Expedition, F-150; Lincoln: Navigator |
| RAM1683 | F | 2012 | 2020 | Hino: 195 |
| RAM1693 | F | 2007 | 2021 | Dodge/Freightliner/Mercedes-Benz: Sprinter 2500; MB Metris |
| RAM1695 | F | 2012 | 2017 | Hino: 155 |
| RAM1842 | F | 2015 | 2021 | Ram: ProMaster 2500, ProMaster 3500 |
| RAM2018 | F | 2017 | 2022 | Ford: F-450 Super Duty, F-550 Super Duty |

ORDER YOURS TODAY • 1-800-314-2543 • abswhse.com